

Thursday 4th March



The Giant's Necklace Abstract Art

Today, we are going to create an abstract piece of art in the style of Patrick Heron, inspired by the character of Cherry and the events of *The Giant's Necklace*.

On Monday, you found out about the artist and spotted the connection with the story setting – Patrick Heron lived in Cornwall and enjoyed painting the area around Zennor, where *The Giant's Necklace* is set.

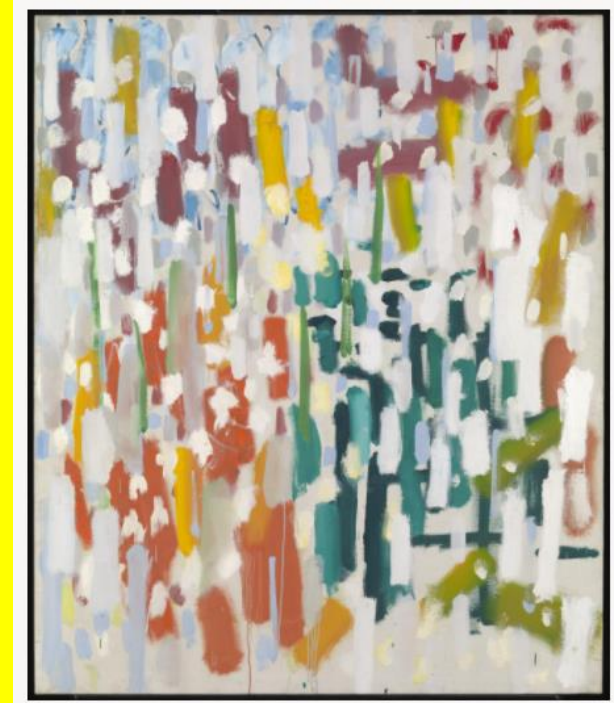
Patrick's paintings are full of imagination and fascinating shapes. He loved the town St Ives in Cornwall and a lot of his work is inspired by scenes and images from there. For example, the painting *Harbour Window with Two Figures : St Ives : July 1950* shows a view of the harbour from his window. Patrick said he was interested in showing the indoors and outdoors in his art..

WHAT STYLE DID HE PAINT IN?

A lot of Patrick's work is known as abstract art. Abstract paintings tend not to look exactly like what we see in real life. A lot of his paintings explore images and scenes from his everyday life, like the beach, the sky, or the garden in his house.



What we found out from our research...



How did he use colour?

Colour is a very important in Patrick's work. He loved to play around with colour and light to create feelings in his paintings.

Horizontal Stripe Painting

Heron used simple natural forms as a starting point for the lines and shapes in many of his paintings.



Which natural forms can you see here?

Azaelea Garden



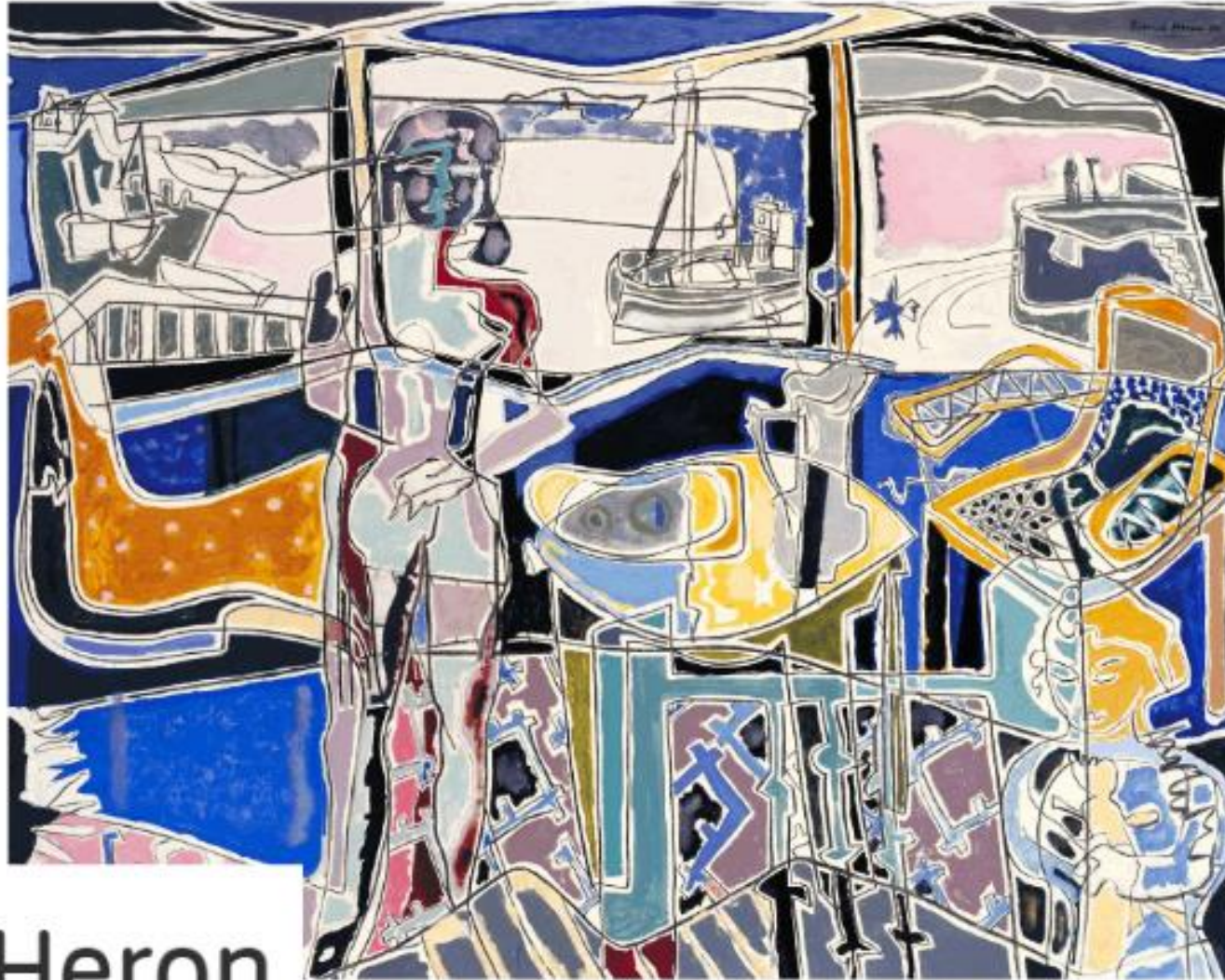
Boats at Night

Discuss
colour, forms
and subject.



Harbour Window With Two Figures

What can you see in this painting?
Which are natural forms?
Which are man-made?
How has he used colour?



Patrick Heron

1920–1999

We are going to use this style of Heron's paintings for our abstract piece inspired by The Giant's Necklace.

Take a look at some examples from previous years on the next pages...



What can you
spot in the
painting
related to
*The Giant's
Necklace?*



Notice how
the artist has
overlaid the
images.



Can you spot the figure of Cherry?

Can we see her form clearly?

How is this painting effective?

The Giant's Necklace Abstract Art

Create your own abstract piece in the style of Heron's Harbour painting.

- Sketch shapes and outlines first, making some overlap.
- The paint or colour with pencils, pastels or crayons.
- Go around the outline of the shapes with felt tip or coloured pencils.