

EYFS REMOTE LEARNING PLAN

Tuesday 23rd February – Elmer and Wilbur

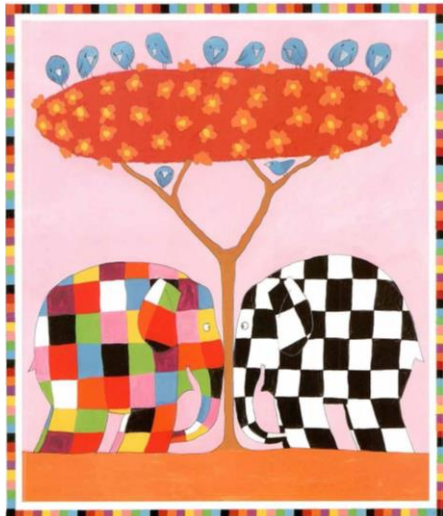


CORE LEARNING TASK

Today we are going to read the story of Elmer and Wilbur. Watch the video of Mrs Hanson reading the story.

In the story, Wilbur hides from Elmer and gives him clues to where he is using his voice. Elmer and the animals search the jungle for Wilbur.

When you have watched the video, draw a picture of Wilbur. How is his patchwork pattern different to Elmer's? Next, cut-out your picture of Wilbur. With an adult, use your cut-out of Wilbur to play a game of hide and seek around the house. Take it in turns to give clues to where Wilbur is hidden. You will need to listen carefully and follow the clues. Good luck!



KEY VOCABULARY

Elmer jungle elephant multi-coloured
patchwork beginning middle end
characters setting plot ventriloquist

MOTOR SKILLS TASK

Curly Caterpillars – this week we are going to practise our curly caterpillar letters – a, c, d, e, f, g, o, q, s. Take care to use the lines in your remote learning book. Use your cursive writing frame to copy each letter. Think carefully about those letters that sit tall or under the line.

Monster Zig Zags – this week we are going to practise our curly caterpillar letters – a, c, d, e, g, o, q, s. Use the dotted sheet to help you practise each of the letters.

One Arm Robots & Ladder Letters – today we are going to practise our pattern writing. Watch the video of Mrs Hanson explaining what to do.

MATHEMATICS TASK

Today we are going to practise our addition skills. You will need to collect 10 small items to help you count.

Print off the Elmer Addition worksheet from today's learning page. Look carefully at the addition in each square. Use the objects to create your addition:


$$\begin{array}{c} \text{4} \\ \text{+ 1} \\ \hline \end{array} =$$


$$\begin{array}{c} \text{6} \\ \text{+ 3} \\ \hline \end{array} =$$

When you have calculated your answer, use the key at the bottom of the page to colour in each square in the correct colour. Don't forget to take a picture of your completed patchwork elephant and put it on SeeSaw for your Key Worker to see.

PHONICS TASK

BLUES – Today's new sound: /b/ On espresso, watch the video on 'Scrap's Phonics' for /b/

On **Phonics Play**, play **Buried Treasure**. Select **phase 2** and /b/

Lay the following sounds on the floor: **b/e/d/b/u/g/**

Choose the correct sounds to make the following words: **bed/bug**

YELLOW – on **Phonics Play**, play **Picnic on Pluto**; select **phase 2** and **revise all sounds**.

Practise reading and writing the caption: **a doll in a cot**

REDS – practise the sound you learnt yesterday /j/

Today's new sound: /v/ On espresso, watch the video on 'Scrap's Phonics' for /v/

On **Phonics Play**, play **Buried Treasure**. Select **phase 3** and /v/

Practise reading and writing the caption: **the red van**

PURPLES – practise reading the word: **put**

Join in with Miss Brown on seesaw. Ask a grown-up to say the following sounds one at a time: **sh/ch/th/th/ng** Practise writing down each sound.

On espresso, search for **Scrap's Phonics**, select /ng/ and play the 'blending' game.

Practise reading and writing the sentence: **This is a thin moth.**

GREENS – Today's new sound: /or/ On espresso, watch the video on 'Polly's Phonics' for /or/

On **Phonics Play**, play **Buried Treasure**. Select **phase 3** and words containing /or/

Practise reading and writing the sentence: **I will sort the socks.**

KEEPING IN TOUCH

Dear Pupils, please submit your work using Seesaw as soon as you have completed your task. This can include a photograph of your completed task, a video or an uploaded file. Your Key Worker will look forward to receiving your work and sharing feedback with you.

Dear Parents, please do not hesitate to use our Year Group emails if you have any questions or concerns. Kind regards, Mrs Hanson and Miss Brown.

eyfs@sherwood.lancs.sch.uk

