

Find all the factors of the following numbers. The number of factors is shown in brackets.

- |    |        |    |         |
|----|--------|----|---------|
| 13 | 8 (4)  | 17 | 15 (4)  |
| 14 | 25 (3) | 18 | 32 (6)  |
| 15 | 22 (4) | 19 | 60 (12) |
| 16 | 18 (6) | 20 | 36 (9)  |

a) Circle the factors of 30

5    15    25    3    30    4    2    12    60

Which number has the most factors? Tick your answer.

64

48

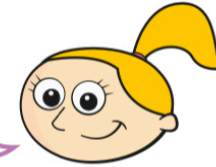
Amir and Eva are describing numbers using factors.



Amir

The number 11 does not have any factors.

My number lies between 20 and 25. It only has two factors.



Eva

a) Is Amir correct? \_\_\_\_\_

Explain your answer.

---

---

b) What number is Eva thinking of?